

**PENNINGTON COUNTY
BOARD OF COMMISSIONER'S MEETING
JUSTICE CENTER - COUNTY BOARD ROOM
TUESDAY, JANUARY 7th, 2020, 10:00 A.M.**

AGENDA

Pledge of Allegiance

10:00 Reorganization

10:20 Ray Kuznia – County Sheriff

10:35 Peter Nelson – Pennington County SWCD

County Auditor's Items

(This agenda is subject to change)

PENNINGTON COUNTY

LAW ENFORCEMENT CENTER



THIEF RIVER FALLS, MINNESOTA 56701

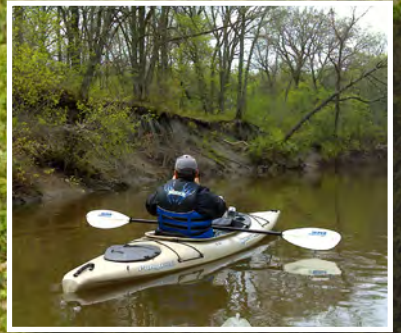
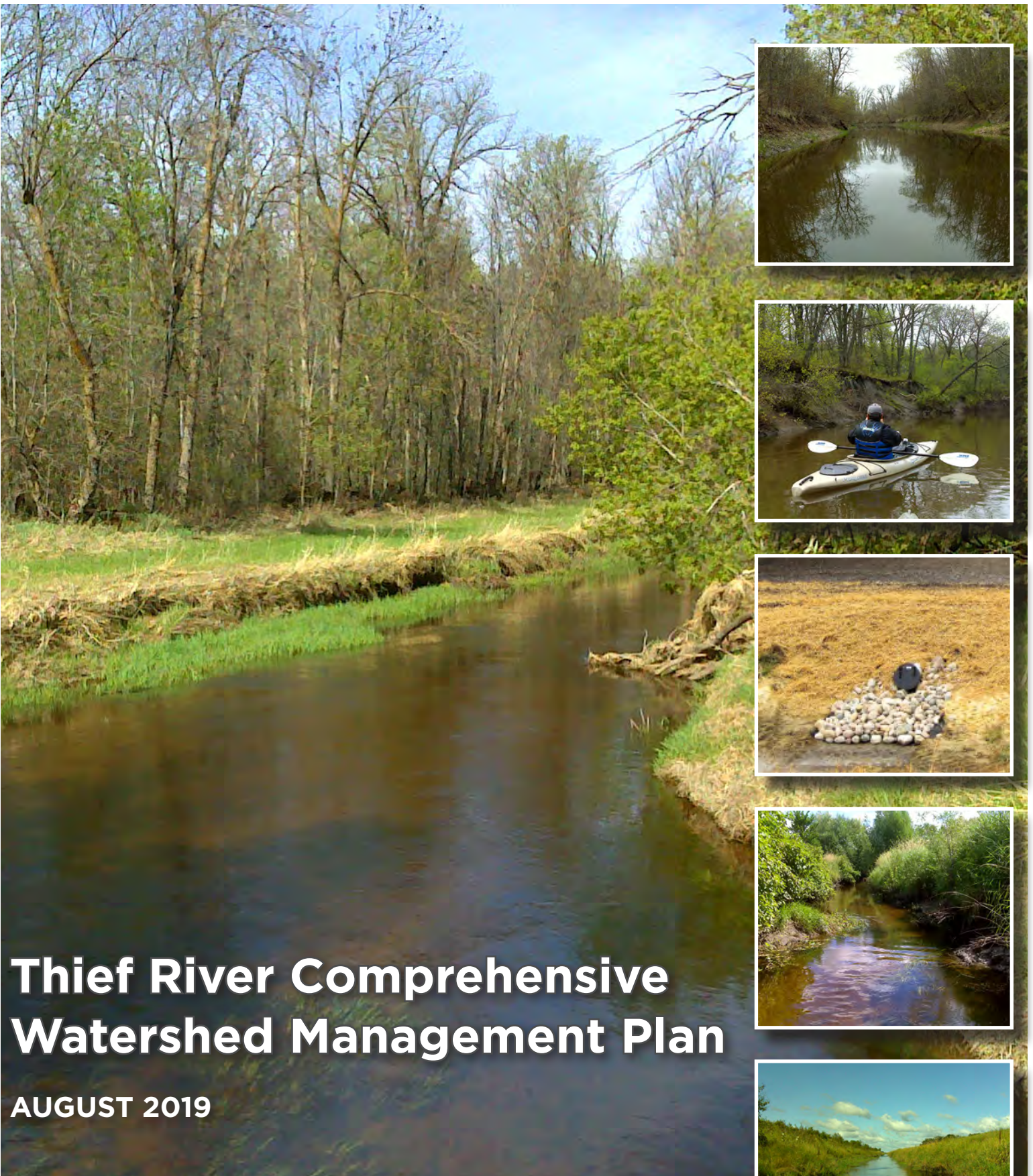
RAY D. KUZNIA, SHERIFF
P.O. BOX 484; PHONE (218) 681-6161

To: Sheriff Kuznia
From: David Casanova
Ref: Facility Fee Schedule
Date: January 6, 2020

After reviewing the current facility fees, it was noticed that several areas seem to be slightly below what others around the state are currently charging

In efforts to continue to assist in reducing the impact to the overall facility budget, I proposal the following fee modification for an implementation date of **February 1, 2020**:

Description of Fee	Current Fee	Proposed Fee
Booking Fee	\$10.00	\$25.00
Urinalysis (UA)	\$0.00	\$15 and full cost for lab confirm
Huber	\$17.50/day	\$25.00/day
Out of County Huber	\$22.50/day	\$50.00/day
Maintenance/Locker Key	\$15.00	\$20.00
Huber Meal cost	\$2.30 Breakfast \$3.15 Lunch \$3.30 Supper	\$5.00 \$5.00 \$5.00
Inmate Nurse request	\$5.00	\$10.00
Rx Medication	Cost of Medication	Cost of Medication
Over the Counter Medication (OTC)	\$1.00/dose	\$1.00/Dose
ER visits	\$25.00	\$35.00 Co-pay or full cost for sentenced/convicted
Dental Visit	\$0.00	\$35.00 Co-pay or full cost for sentenced/convicted
Mental Health Visit	\$0.00	\$00.00 Co-pay or full cost for sentenced/convicted
Public applicant fingerprints	\$15.00	\$15.00
Inmate boarding (another county)	\$55.00	\$55.00
High risk offender boarding	\$55.00	\$75.00



Thief River Comprehensive Watershed Management Plan

AUGUST 2019

Prepared for:
Thief River Planning Partnership through the
One Watershed, One Plan Program

Prepared by:
Houston Engineering, Inc.

Thief River Watershed | ONE WATERSHED, ONE PLAN



Glossary of Abbreviations	i
Executive Summary	iv



1. INTRODUCTION

1. INTRODUCTION	1-1
1.1 Plan Overview	1-2
1.2 Planning Partners and Plan Development	1-2
1.3 Incorporating Comments into the Plan	1-3



2. ANALYSIS & PRIORITIZATION

2. IDENTIFICATION AND PRIORITIZATION OF RESOURCE CATEGORIES, CONCERNS, AND ISSUES	2-1
2.1 Identification and Summary of Resource Categories, Concerns, and Issues	2-1
2.2 Issue Prioritization Process	2-5
2.3 Priority Concerns and Issues	2-14
2.3.1 Priority Issues for Implementation	2-14
2.3.2 Lower Tier Issues	2-18
2.4 Emerging Issues	2-33
2.4.1 Scientific and Emerging Issues	2-33
2.4.1.1 Climate Change and Infrastructure Resilience	2-33
2.4.1.2 Contaminants of Emerging Concern	2-36
2.4.1.3 Invasive Species	2-36
2.4.1.4 Wind Erosion	2-37
2.4.1.5 Groundwater-Fed Irrigation	2-38
2.4.1.6 Tile Drainage	2-38
2.4.2 Policy and Funding Emerging Issues	2-39
2.4.2.1 Funding and Plan Implementation	2-39
2.4.2.2 Conservation Practice Delivery Mechanism	2-39
2.4.2.3 Inconsistent Administration and Enforcement of Minnesota Rules and Statutes	2-40
2.4.2.4 Farm Law Legislation (National and International)	2-40
2.4.2.5 Renewable Energy Legislation (State)	2-40
2.4.3 Process for Addressing Emerging Issues and Data Gaps	2-40



3. MEASURABLE GOALS

3. ESTABLISHMENT OF MEASURABLE GOALS	3-1
3.1 Measurable Goal Development	3-1
3.1.1 Using Restoration and Protection Strategies to Achieve Water Quality Measurable Goals	3-2
3.2 Priority Issues Measurable Goal Categories	3-10
3.2.1 Drinking Water - Reduce Nitrate Contamination	3-10
3.2.1.1 Nitrates	3-10
3.2.2 Aquatic Life and Aquatic Recreation - Reduce Sediment and Phosphorus Delivery and Load	3-11



Thief River Watershed | ONE WATERSHED, ONE PLAN



3. MEASURABLE GOALS

3.2.3 Aquatic Life and Aquatic Recreation - Reduce Bacteria Delivery and Load	3-14
3.2.4 Aquatic Life and Aquatic Recreation - Increase Dissolved Oxygen Concentration	3-15
3.2.5 Surface Runoff and Flooding - Reduce Damages from Peak Flows and Overland Flooding	3-16
3.2.6 Drainage Management Systems - Erosion and Sedimentation Reduction	3-17
3.2.7 Shoreland and Riparian Areas - Improve and Increase Vegetative Cover	3-18
3.2.8 Habitat for Wildlife - Enhance Connectivity and Cover	3-19
3.2.9 Aquatic Habitat for Fish, Macroinvertebrates, and Aquatic Life - Restore Connectivity and Habitat, Moderate Flow Regimes, and Promote Vegetated Banks and Buffers	3-19
3.2.10 Public Knowledge of and Behavior Related to Water Resources - Increase Stakeholder Participation	3-21
3.2.11 Data Collection - Enhance Knowledge of Baseline Conditions	3-21
3.2.11.1 Altered Hydrology	3-22
3.2.11.2 Groundwater Quantity	3-22
3.2.11.3 Groundwater Quality	3-23
3.2.11.4 Arsenic	3-23
3.2.11.5 Bacteria	3-23
3.2.11.6 Nitrates	3-23
3.2.11.7 Tile Drainage	3-23
3.2.12 Healthy Rural Landscapes - Improve Agricultural Soil Health	3-24
3.2.13 Healthy Rural Landscapes - Reduce Surface and Groundwater Contamination	3-24



4. TARGETED IMPLEMENTATION

4. TARGETED IMPLEMENTATION	4-1
4.1 Purpose and Structures	4-1
4.2 Importance of Work Completed by Others	4-2
4.2.1 Guiding Implementation: Tools for Targeting	4-3
4.2.1.1 Prioritize, Target, and Measure Application (PTMApp)	4-3
4.2.1.2 PTMApp Limitations	4-5
4.3 Watershedwide Implementation	4-5
4.4 Planning Region Implementation	4-15
4.4.1 Planning Region Targeted Implementation Schedules	4-18
4.5 Planning Region Implementation Profiles	4-58
4.5.1 Critical Sediment and Phosphorus Areas	4-76



Thief River Watershed | ONE WATERSHED, ONE PLAN



5. IMPLEMENTATION PROGRAM

5. IMPLEMENTATION PROGRAM	5-1
5.1 Implementation Programs	5-1
5.1.1 Projects and Practices	5-1
5.1.2 Education and Outreach	5-4
5.1.2.1 Coordinated Public Outreac	5-5
5.1.2.2 Stakeholder Forum	5-6
5.1.3 Research and Monitoring	5-6
5.1.4 Capital Improvements	5-7
5.1.4.1 Operations and Maintenance	5-10
5.1.5 Regulatory Administration	5-14
5.1.5.1 Statutory Responsibilities	5-14
5.1.5.2 Local Ordinances	5-17
5.1.5.3 Rules	5-17
5.2 Funding	5-22
5.2.1 Local Funding	5-26
5.2.1.1 Establishment of MS 103D.729 Water Management Districts	5-26
5.2.2 State Funding	5-29
5.2.3 Federal Funding Sources	5-29
5.2.4 Other: Non-Governmental Organizations and Private Entities	5-29
5.3 Plan Administration & Coordination	5-29
5.3.1 Decision-Making and Staffing	5-29
5.3.2 Collaboration	5-31
5.3.2.1 Collaboration with Other Units of Governments	5-31
5.3.2.2 Collaboration with Others	5-32
5.3.3 Work Planning	5-32
5.3.3.1 Local Purpose	5-32
5.3.3.2 State Purpose	5-32
5.3.4 Assessment and Evaluation	5-32
5.3.4.1 Annual Evaluation	5-32
5.3.4.2 Five-Year Evaluation	5-33
5.3.4.3 Reporting	5-33
5.3.5 Plan Amendment Process	5-33
5.3.5.1 Criteria and Format for an Amendment	5-34
5.3.6 Formal Agreements	5-35



Thief River Watershed | ONE WATERSHED, ONE PLAN

APPENDIX

Appendix A	Land and Water Resources Inventory
Appendix B	Memorandum of Agreement
Appendix C	Policy Committee Members
Appendix D	Summary of Existing Management Plans and Reports
Appendix E	Resource Concern Maps Data Dictionary
Appendix F	Prioritization of Issues
Appendix G	Using Restoration and Protection Strategies to Achieve Measurable Goals
Appendix H	Planning Region Prioritization Process
Appendix I	Top Ten Practices by Treatment Group and Planning Region
Appendix J	BWSR Local Funding Authorities Guidance





Prepared for:
Thief River Planning Partnership through the
One Watershed, One Plan Program

Prepared by:
Houston Engineering, Inc.

GLOSSARY OF ABBREVIATIONS

1W1P	One Watershed, One Plan
AC	Advisory Committee
AIS	Aquatic Invasive Species
AUID	Assessment Unit Identification
BFE	Base Flood Elevation
BWSR	Board of Water and Soil Resources
CD	County Ditch
CFS	Cubic Feet per Second
DO	Dissolved Oxygen
DWSMA	Drinking Water Supply Management Area
ECS	Ecological Classification System
EDA	Environmental Data Access (MPCA Database)
EPA	Environmental Protection Agency
FDR	Flood Damage Reduction
FEMA	Federal Emergency Management Authority
FTPGW	Fail to Protect Groundwater
HEI	Houston Engineering, Inc.
HSPF	Hydrological Simulation Program - FORTRAN
HUC	Hydrologic Unit Code
IBA	Important Bird Area
IBI	Index of Biological Integrity
ISTS	Individual Sewage Treatment System
ITPHS	Imminent Threat to Public Health and Safety
JD	Judicial Ditch
LWRI	Land and Water Resources Inventory
MCBS	Minnesota County Biological Survey
MDA	Minnesota Department of Agriculture
MDH	Minnesota Department of Health
MnDNR	Minnesota Department of Natural Resources
MOA	Memorandum of Agreement
MPCA	Minnesota Pollution Control Agency



MPN	Most Probable Number
MSHA	Minnesota Stream Habitat Assessment
MWRPP	Major Watershed Restoration and Protection Plan
NPDES	National Pollutant Discharge Elimination System
NRCS	Natural Resources Conservation Service
NWI	National Wetland Inventory
NWR	National Wildlife Refuge
PC	Policy Committee
PTMApp	Prioritize, Target, and Measure Application
PWG	Planning Work Group
RRBC	Red River Basin Commission
RLWD	Red Lake Watershed District
SD	State Ditch
SOM	Soil Organic Matter
SSTS	Subsurface Sewage Treatment Systems
SWAA	Source Water Assessment Area
SWB	Soil-Water Balance
SWCD	Soil and Water Conservation District
TALU	Tiered Aquatic Life Use
TMDL	Total Maximum Daily Load
TP	Total Phosphorus
TSS	Total Suspended Solids
USDA	US Department of Agriculture
USFWS	US Fish and Wildlife Service
USGS	US Geological Survey
WASCOBS	Water and Sediment Control Basins
WEQ	Wind Erosion Equation
WEPS	Wind Erosion Prediction System
WHAF	Watershed Health Assessment Framework
WHPA	Wellhead Protection Area
WRAPS	Watershed Restoration and Protection Strategy



DEFINITIONS

Measurable Goal Category—The organizational framework for measurable goals. Includes the priority resource issues addressed, short- and long-term measurable goals, and metrics for measuring progress towards attainment.

Measurable Goal—A statement of intended accomplishment for each priority issue. Goals are meant to be simply stated and achievable, can be quantitative or qualitative, can be long- or short-term, and are meant to be measurable through the implementation of actions to attain a desired outcome.

Metric—A feature, attribute, characteristic, amount, or quantity that forms the unit by which progress is measured towards attaining a measurable goal in a given time frame. For this plan, two time frames are used: short-term (covering the 10-year plan period) and long-term (following the 10-year plan period).

Priority Issue—Issues categorized, through the prioritization process (Section 2.0), as Priority Level A or B issues. Priority issues will be the focus of this comprehensive plan.

Resource Category—A resource category, or “resource,” is defined as a natural, economic, educational, biotic, aesthetic, land, or similar asset. Resources are generally considered something that can be managed, and are generally broad, such as surface water or groundwater.

Resource Concern—A resource concern, or “concern,” is defined as a physical, biological, chemical, or geological subset or component of a resource. For example, the resource “surface water” can be further refined into several components, including wetlands and drainage systems.

Resource Issue—A resource issue, or “issue,” affecting a concern is defined as a factor, stressor, pollutant or difficulty resulting in an adverse consequence for a concern. A concern can have one or many issues. For instance, nitrate nitrogen causing the contamination of drinking water supply could be an issue (i.e. nitrate nitrogen) affecting a concern (i.e. drinking water supplies).

REFERENCES

“One Watershed, One Plan – Plan Content Requirements”. (2016). Minnesota Board of Water and Soil Resources.

“60-Day Notification Responses”. (2017). Minnesota Pollution Control Agency.

“Rural Land Stewardship Analysis”. (2019). Houston Engineering, Inc.



EXECUTIVE SUMMARY

The Thief River Watershed One Watershed, One Plan (1W1P) represents an evolution from traditional water planning to watershed-based planning for northwestern Minnesota. The 1W1P is a statewide effort, aimed to transform the way local entities plan for resource management. The implementation-focused 1W1P combines local entities that focus on what resource issues are most important locally. In the Thief River Watershed, this brings three counties, three soil and water conservation districts, and one watershed district together into one cohesive and comprehensive water planning document.

The Thief River Watershed 1W1P Planning Group previously entered into a formal agreement through a Memorandum of Agreement to lead the 1W1P planning process for the Thief River Watershed. The parties are drafting a revised Memorandum of Agreement for implementing this plan. Expectations are that the roles of the local Policy Committee, Planning Work Group, and Advisory Committee will shift and change focus during plan implementation. Ultimately, the goal of this plan is to use local and state resources to efficiently manage, restore, and protect water resources in the Thief River Watershed. This plan is a ten-year guide to assist local governments to coordinate implementation efforts through annual work planning, improve efficiencies, and reduce redundancies in local water resource management.

The Thief River One Watershed, One Plan (1W1P) planning area is in northwest Minnesota, encompassing portions of Beltrami, Marshall and Pennington counties and the Red Lake Watershed District (RLWD). The Thief River Watershed is endowed with productive agricultural land as well as invaluable habitat for aquatic life, deer, waterfowl, shorebirds, and other migrating birds. The Thief River Watershed planning area drains approximately 1,048 square miles (sq. mi.) or 671,024 acres. Fourtown, Goodridge, Grygla, Holt, and Thief River Falls are the only municipalities in the watershed.

A watershed is an area of land where all the water drains to a common point. In the case of the Thief River Watershed, this common point is at the confluence of the Thief River and the Red Lake River. The Thief River Watershed is part of the larger Red River Basin. It contributes flow downstream through the Red Lake River, to the Red River of the North, and eventually to Lake Winnipeg and Hudson Bay in Manitoba, Canada. It is a headwaters watershed, meaning that no water flows into the Thief River Watershed from anywhere else. As a headwaters watershed, the Thief River Watershed is located within an area of the Red River Basin that the Red River Basin Flood Damage Reduction Work Group identified as a strategic area to retain water. The watershed also has large expanses of prime wetland habitat, primarily in the Agassiz National Wildlife Refuge and the Thief Lake Wildlife Management Area.

The Thief River runs along the western side of the watershed, beginning at Thief Lake down through Agassiz National Wildlife Refuge to the Red Lake River in Thief River Falls. Within the planning regions and tributaries, portions of the Thief River are also legal drainage ditches—State Ditch 83 and Judicial Ditch 21. The Thief River receives water from the east from the Moose River (Judicial Ditch 21), the Mud River (Judicial Ditch 11), Branch 200 of Judicial Ditch 11 (Lost River), Marshall County Ditch 20, and Judicial Ditch 30. Just as the Thief River Watershed is part of the larger Red River Basin, these rivers and drainage ditch systems are also considered smaller watersheds, or subwatersheds, within the Thief River Watershed. These watersheds, along with three subwatersheds along the path of the Thief River (Upper Thief River/ SD 83, Middle Thief River/ SD 83, and Lower Thief River/ SD 83) are referred to as “planning regions” throughout this document and are shown in **Figure ES-1**.

As a result of its position in the Red River Basin and the abundance of state and federally protected wildlife habitat, there are more than 30 impoundments and reservoirs in the watershed. These impoundments are managed for the flood damage reduction benefits they provide to the watershed and the Red River Basin as well as for wildlife. *This plan acknowledges the multiple benefits for flood protection and wildlife that are provided by impoundments but recommends additional actions that local landowners can implement on a voluntary basis through partnerships with local, state, and federal entities to reduce runoff locally and downstream, improve water quality, and manage water resources in a balanced and cooperative manner.*



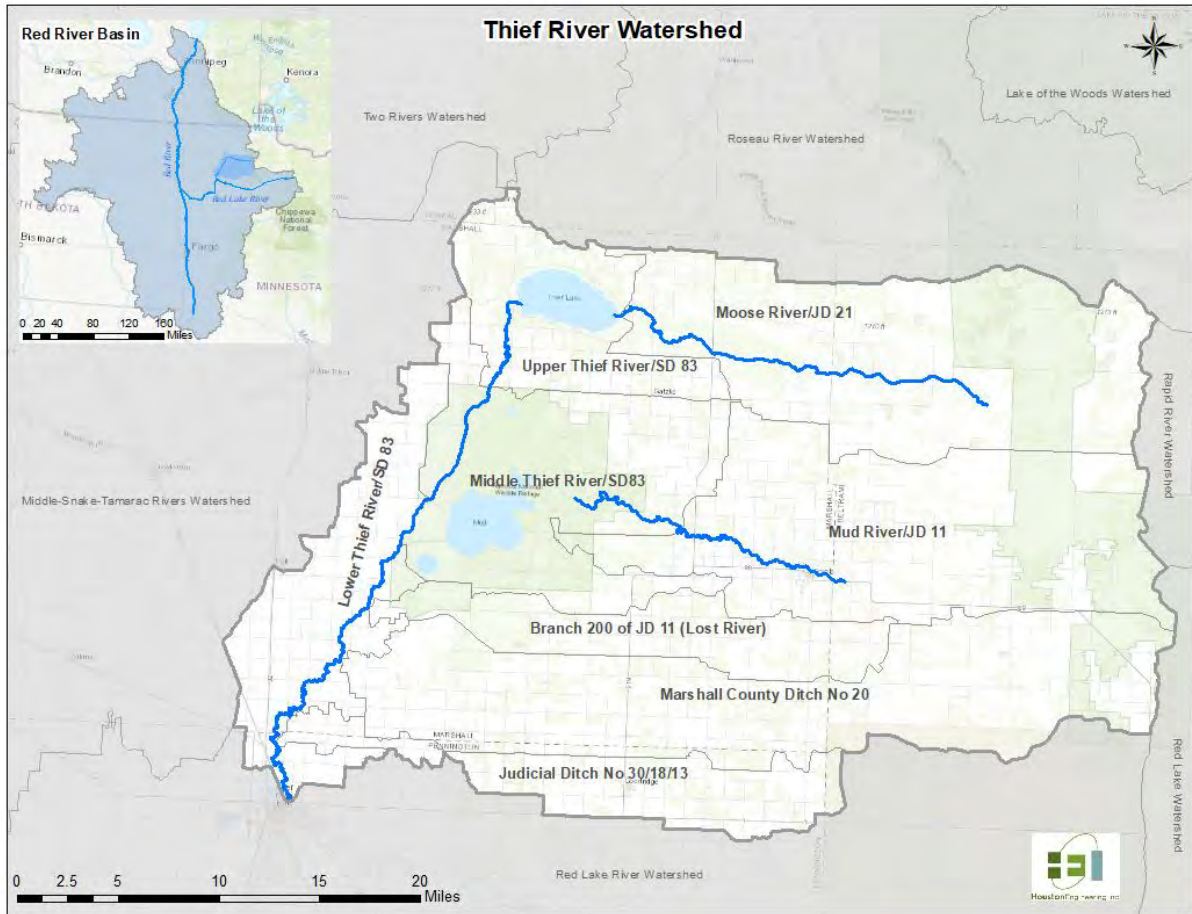


Figure ES-1: Thief River Watershed 1W1P Plan Area and Planning Regions

In 2017, members of the three counties, three soil and water conservation districts (SWCDs) and one watershed district within the Thief River Watershed joined together to create the Thief River 1W1P Planning Group. The purpose of the Thief River 1W1P Planning Group was to unite local entities that would otherwise have separate local water management plans under one comprehensive watershed management plan, creating a cohesive vision for implementing actions to improve locally prioritized issues. To address these issues, this plan establishes measurable goals and actions to be implemented on a voluntary basis through partnerships between local, state, and federal entities and private landowners. This plan hopes to unlock noncompetitive watershed-based state funding for implementation as recommended by the State of Minnesota Clean Water Council. It does not supersede nor replace existing statutes, rules, and local ordinances that regulate water resource management. Rather, it is a guide for local governments to work together in coordination with landowners to efficiently address water resource issues in the watershed. This plan is the result of that vision and a significant step toward accelerating prioritized, targeted, and measurable implementation efforts in the Thief River Watershed.

ADMINISTRATION AND COORDINATION

The Planning Work Group, Advisory Committee, and Policy Committee structures from the plan development process will be maintained throughout the lifespan of the plan. The Planning Work Group and Policy Committee will meet on a quarterly basis, and the Advisory Committee will meet annually. A Plan Coordinator at the direction of the Policy Committee will become responsible for completing annual work planning and submitting annual reports. The RLWD will serve as the central fiscal agent.



IDENTIFYING AND PRIORITIZING ISSUES

The Thief River Watershed is home to a diverse range of resources, including:

- a network of streams, rivers, and agricultural drainage systems;
- approximately 330,223 acres of wetlands;
- more than 30 impoundments;
- unique habitat areas for aquatic and terrestrial species; and
- urban and rural land uses.

With all these resources, there are many issues to manage. In recognition of staff, time, and resource limitations, the Thief River 1W1P Planning Group needed to prioritize issues as the focus of implementation efforts during the 10-year lifespan of this plan.

The Thief River 1W1P Planning Group developed a comprehensive inventory of 14 resources and 46 issues (Table 2-1) impacting the watershed using a combination of existing reports, data, and stakeholder input. This comprehensive inventory was used to prioritize issues to be addressed through implementation efforts. Issues were prioritized and designated as an A, B, C, or unranked priority tier based on input from the public and professional judgment.

From this initial inventory, 27 issues emerged as priority issues. These priority issues ended up being ranked as either Priority Tier A (**Table ES-1**) or B (**Table ES-2**). They will be the focus of initial implementation efforts within the Thief River 1W1P planning area.

Table ES-1: Priority Tier A Issues

Resource Category	Resource Concern	Issue
Priority Tier A		
2. Surface Waters: Water resulting from excess precipitation leaving the landscape and collecting in ditches, streams, rivers, creeks, wetlands, lakes and ponds.		
2. Surface Waters	2.1 Aquatic Life and Recreation	2.1.1: Water Quality: Elevated concentrations of suspended solids, sediment, and total phosphorus approaching (protection) or exceeding (restoration) water quality standards for aquatic life, which can lead to aquatic life impairments.
		2.1.2: Water Quality: Elevated concentrations of bacteria approaching (protection) or exceeding (restoration) water quality standards for aquatic recreation, which can impact beneficial uses.
		2.1.7 Water Quality: Decreased stream channel stability driven by hydrologic changes that increase erosion and sediment transport, which can decrease beneficial uses of streams, rivers, and lakes.
	2.2 Surface Runoff and Flooding	2.2.1: Water Quantity: Changes in natural water storage and vegetative cover on the landscape, including natural depressional areas, wetlands, loss of vegetative cover and soil organic matter, which can cause an increase in the volume of runoff, peak discharges, and water levels, causing flooding and flood damages to agricultural land, wildlife habitat, transportation systems, buildings, and structures.
		2.2.2: Water Quantity: High peak flows causing flood damages to agricultural land and public infrastructure, homes and other structures, rerouted flows, and accelerated bank erosion to artificial and natural waterways; low flows which can impact aquatic life and aquatic recreation.



Resource Category	Resource Concern	Issue
	2.3 Drainage Management Systems	2.3.1: Increased erosion and sedimentation resulting from bank failure and slumping, and gully formation prevents the proper function of drainage systems and increases maintenance costs.
	2.5 Drinking Water	2.5.1: Water Quality: Elevated concentrations of sediment, and organic matter have a detrimental impact on drinking water quality.
	2.6 Wetlands	2.6.1: Sediment deposition in wetlands degrades hydrologic function, contributes to nonnative plant species succession, and contributes to sediment and highly organic/low dissolved oxygen water to downstream waterways.
3. Fish and Wildlife Habitat and Unique Natural Features: Visible natural features and characteristics of the landscape, which are often prominent or unique.		
3. Fish and Wildlife Habitat	3.1 Aquatic Habitat for Fish, Macroinvertebrates, Wildlife, and Aquatic Life	3.1.3: Degradation of aquatic habitat, aquatic vegetation, and riparian habitat associated with increased drainage, channelization, ditch maintenance, and development, and the physical damage to the banks and beds of creeks, streams and rivers from higher and faster flows pose public lands and waters management challenges.
	3.2 Shoreland and Riparian Zones	3.2.1: Quantity and quality of vegetation along waterways, including riparian forests and buffers along ditches in shorelines, that filter pollutants, retain soil, improve water quality, and restore wildlife habitat.
5. Local Development and Land Stewardship: The management of urban and rural land use through sustainable development.		
5. Local Development and Land Stewardship	5.2 Healthy Rural Landscapes	5.2.1: Reduced soil health, soil protection, excess loss of fertilizers or pesticides, and its impact on agricultural productivity, surface water quality and quantity, sedimentation in water features, and water holding capacity.
		5.2.3: Improperly installed or poorly functioning subsurface sewage treatment systems (SSTS) and individual sewage treatment system (ISTS) increase the potential for ground and surface water contamination, adversely impacting human health and water quality.

Table ES-2: Priority Tier B Issues

Resource Category	Resource Concern	Issue
Priority Tier B		
1. Groundwater: Water which is held underground within the pores of rocks and soils.		
1. Groundwater	1.1 Drinking Water	1.1.1: Water Quality: Protection of generally good quality groundwater supplies from elevated levels of nitrates, arsenic, or other contaminants which, if excessive, can result in implications to human health and treatment costs for public and private wells. Protection is particularly important in vulnerable DWSMAs.
		1.1.2: Water Quality: A limited amount of data available for nitrate, arsenic, and other types of groundwater contamination, which can lead to poorly informed management decisions.



2. Surface Waters: Water resulting from excess precipitation leaving the landscape and collecting in ditches, streams, rivers, creeks, wetlands, lakes and ponds.		
2. Surface Waters	2.1 Aquatic Life and Recreation	2.1.3: Water Quality: Reduced concentrations of dissolved oxygen approaching (protection) or exceeding (restoration) tolerable levels that can affect the diversity of quality of aquatic life.
	2.2 Surface Runoff and Flooding	2.2.3: Regional and basin wide flood issues that might not be addressed by local actions, which can impact local infrastructure, natural resources, agricultural lands and communities.
	2.4 Impoundments and Reservoirs	2.4.1: Increased erosion and sedimentation resulting in reduced storage capacity, invasive species takeover, and ultimately, wildlife habitat degradation.
	2.6 Wetlands	2.6.2: Wetlands have been altered or drained for agricultural production, resulting in a loss of wildlife habitat and temporary water storage on the landscape.
3. Fish and Wildlife Habitat and Unique Natural Features: Visible natural features and characteristics of the landscape, often which are prominent or unique.		
3. Fish and Wildlife Habitat	3.1 Aquatic Habitat for Fish, Macroinvertebrates, Wildlife and Aquatic Life	3.1.1: Modification of waterways, culverts, and dams at impoundment outlets reduce hydrologic connectivity and altered the flow regime resulting in the reduced potential of waterways to support quality fish populations.
	3.3 Terrestrial Habitat for Wildlife	3.3.1: Increased habitat fragmentation and loss of habitat providing food, shelter, terrestrial ecological corridors, and breeding territory for both protected (e.g. endangered, threatened, special concern, and Species of Greatest Conservation Need) and unprotected species.
4. Local Knowledge Base and Technical Capacity: The collective understanding of water related matters within the community and the ability to respond to and resolve water related issues.		
4. Local Knowledge Base and Technical Capacity	4.1 Public Knowledge of and Behavior Relative to Water Issues	4.1.1: Increase public awareness and knowledge of water management issues including general citizens down through school aged children.
		4.1.3: Increase regular input from stakeholders to guide future efforts related to this plan.



	4.2 Data Collection	4.2.1: Information needed to understand baseline conditions for resources to better inform management decisions.
5. Local Development and Land Stewardship: The management of urban and rural land use through sustainable development.		
5. Local Development and Land Stewardship	5.1 Healthy Urban Landscapes	5.1.1: Downstream water quality consequences from stormwater runoff due to increased impervious surface area around water bodies such as lake, streams, and wetlands.
		5.1.4: High levels of E. coli in water monitoring data at stormwater outlets in Thief River Falls, which can impact the beneficial use of downstream resources.
	5.2 Healthy Rural Landscapes	5.2.2: Increased sheet, rill, and wind erosion, and its impact on agricultural productivity, surface water quality, and deposits in drainage systems.
		5.2.4: The impact of feedlots on surface and groundwater quality.

Though these issues will be the initial focus of implementation, this does not restrict local governments from addressing other lower-tier issues identified in the plan or issues that arise in the future. There are also opportunities for issue prioritization to be reviewed and revised during the five-year and 10-year updates to the plan. **Plan Section 2: Identification and Prioritization of Resource Categories, Concerns, and Issues** provides an in-depth description of resource concerns, issues and the process for identifying priority issues.

ESTABLISHING MEASURABLE GOALS

Thirteen measurable goal categories were developed to address the priority issues identified in the Thief River Watershed. Measurable Goal Categories describe a desired condition for a resource being impacted by an issue or multiple issues and are subdivided into one or more short-term goals and long-term goals:

- Short-term measurable goals describe the interim conditions to accomplish or make progress toward during the 10-year lifespan of this plan.
- Long-term measurable goals describe the desired future conditions to accomplish, regardless of timeframe.

In some instances, measurable goals are focused on either protecting resources in good condition or restoring resources that have deteriorated. Within each measurable goal category, short-term and long-term goals set milestones for resource improvement and allow for resource management flexibility during implementation efforts. In order to account for the variation of the urgency and impact of an issue within the watershed, some measurable goals are set at the planning region scale. A variety of information sources were utilized in the development of the measurable goal categories, including:

- goals from existing management plans, studies, reports, data, and information, including WRAPS, TMDLs, local water plans, state strategies, and similar documents;
- input from Advisory Committee members;
- input from Policy Committee members; and
- the knowledge of local water and resource managers provided by the Planning Work Group.



Plan Section 3: Establishment of Measurable Goals provides a detailed description of measurable goal categories and outlines the process of their development. There are 13 measurable goal categories for this plan, which collectively address all the locally prioritized issues. Short-term Goal(s) refer to interim conditions to accomplish during the 10-year lifespan of this plan. Long-term Goal(s) are for the desired future condition to accomplish, regardless of time frame. **Table ES-3** outlines the goals that were developed for the Thief River 1W1P.

Table ES-3: Short- and Long-Term Goals

	Issue: Measurable Goal Categories	Short-term Goal(s)	Long-term Goal(s)
1	Drinking Water – Reduce Nitrate Contamination	Nitrates: Progress made towards long-term goal	Nitrates: <ul style="list-style-type: none"> • Protection – Vigilance Goal: Maintain unaffected private drinking water supply wells with nitrogen concentrations at or near a concentration representative of background and transitional levels (0-4.9 mg/L) • Protection – Threatened Goal: Reduce the number of private drinking water supplies that have nitrate-nitrogen concentrations at risk for nitrate impairment (≥ 5 mg/L but < 9.9 mg/L). • Restoration – Treatment Goal: Restore private drinking water supplies that have nitrate-nitrogen concentrations that currently represent a health concern (≥ 10 mg/L)
2	Aquatic Life and Aquatic Recreation – Reduce Sediment and Phosphorus Delivery and Load	<ul style="list-style-type: none"> • Planning Region scale (Total Phosphorus): Use the phosphorus reduction targets outlined by HSPF and the Thief River Watershed 1W1P Advisory Committee in each planning region: <ul style="list-style-type: none"> ○ Protection: Judicial Ditch 30/18/13: 5% or 559 lbs./yr. ○ Protection: Branch 200 of JD 11 (Lost River): 5% or 333 lbs./yr. ○ Protection: Lower Thief River/SD 83: 5% or 5,091 lbs./yr. ○ Protection: Marshall County Ditch 20: 5% or 1,135 lbs./yr. ○ Protection: Middle Thief River/SD 83: 5% or 2,177 lbs./yr. ○ Protection: Moose River/JD 21: 5% or 811 lbs./yr. ○ Protection: Mud River/JD 11: 5% or 1,878 lbs./yr. ○ 3Protection: Upper Thief River/SD 83: 5% or 574 lbs./yr. • Planning Region Scale (Sediment): Use the sediment reduction targets 	<ul style="list-style-type: none"> • Planning Region Scale (Phosphorus): <ul style="list-style-type: none"> ○ Extend short-term protection and restoration goals • Planning Region Scale (Sediment): <ul style="list-style-type: none"> ○ Extend short-term protection and restoration goals



	Issue: Measurable Goal Categories	Short-term Goal(s)	Long-term Goal(s)
		<p>outlined by the TMDL, HSPF and the Thief River 1W1P Advisory Committee in each planning region:</p> <ul style="list-style-type: none"> ○ Protection (Highest Quality): Judicial Ditch 30/18/13: 5% or 70 tons/yr. ○ Protection (Highest Quality): Lost River: 5% or 34 tons/yr. ○ Restoration (Impaired): Lower Thief River/SD 83: 15% or 2,335 tons/yr. ○ Protection (Highest Quality): Marshall County Ditch 20: 5% or 128 tons/yr. ○ Restoration (Potential Impairment): Middle Thief River/SD 83: 15% or 653 tons/yr. ○ Protection (Highest Quality): Moose River/JD 21: 5% or 49 tons/yr. ○ Protection (Nearly Impaired): Mud River/JD 11: 10% or 290 tons/yr. ○ Protection (Highest Quality): Upper Thief River/SD 83: 5% or 103 tons/yr. 	
3	<p>Aquatic Life and Aquatic Recreation – Reduce Bacteria Delivery and Load</p>	<ul style="list-style-type: none"> ● Planning Region Scale: <ul style="list-style-type: none"> ○ Protection (Highest Quality): Judicial Ditch 30/18/13: Maintain current conditions ○ Protection (Nearly Impaired): Lower Thief River/SD 83: Maintain current conditions ○ Protection (Highest Quality): Lost River: Maintain current conditions ○ Protection (Highest Quality): Marshall County Ditch 20: Maintain current conditions ○ Protection (Nearly Impaired): Middle Thief River/SD 83: Maintain current conditions ○ Protection (Highest Quality): Moose River/JD 21: Maintain current conditions ○ Protection (Nearly Impaired): Upper Thief River/SD 83: Maintain current conditions ● Reach-specific scale: <ul style="list-style-type: none"> ○ Restoration: Mud River/JD 11: Reduction in the length of streams classified as impaired by meeting the state water quality standard 	<ul style="list-style-type: none"> ● Planning Region Scale: <ul style="list-style-type: none"> ○ Protection: Extend short-term goal ● Reach-specific scale: <ul style="list-style-type: none"> ○ Restoration: Mud River/JD 11: Reduction in the length of streams classified as impaired by meeting the state water quality standard (where a TMDL has been completed)



	Issue: Measurable Goal Categories	Short-term Goal(s)	Long-term Goal(s)
		(where a TMDL has been completed)	
4	Aquatic Life and Aquatic Recreation – Increase Dissolved Oxygen Concentration	<ul style="list-style-type: none"> • Planning Region Scale: <ul style="list-style-type: none"> ○ Protection (Highest Quality): Judicial Ditch 30/18/13: >95% of readings are above or equal to daily minimum of 5 mg/L ○ Protection (Highest Quality): Lower Thief River/SD 83: >95% of readings are above or equal to daily minimum of 5 mg/L ○ Restoration (Potential Impairment): Lost River: >90% of readings are above or equal to daily minimum of 5 mg/L; maintain base flow within channel ○ Protection (Nearly Impaired): Marshall County Ditch 20: >90% of readings are above or equal to daily minimum of 5 mg/L ○ Protection (Nearly Impaired): Middle Thief River/SD 83: >90% of readings are above or equal to daily minimum of 5 mg/L ○ Restoration (Impaired): Moose River/JD 21: >90% of readings are above or equal to daily minimum of 5 mg/L; maintain measurable flow within channel during late summer ○ Restoration (Impaired): Mud River/JD 11: >90% of readings are above or equal to daily minimum of 5 mg/L; maintain >5 CFS of flow at Hwy 89 during late summer ○ Protection (Highest Quality): Upper Thief River/SD 83: >95% of readings are above or equal to daily minimum of 5 mg/L 	<ul style="list-style-type: none"> • Planning Region Scale: <ul style="list-style-type: none"> ○ Extend short-term goal • Reach-specific scale: <ul style="list-style-type: none"> ○ Extend short-term goal
5	Surface Runoff and Flooding – Reduce Damages from Peak Flows and Overland Flooding	<ul style="list-style-type: none"> • Judicial Ditch 30/18/13: Reduce average annual runoff by 0.125 inches (442 ac-ft) • Lower Thief River/SD 83: Reduce average annual runoff by 0.125 inches (649 ac-ft) • Lost River: Reduce average annual runoff by 0.125 inches (438 ac-ft) • Marshall County Ditch 20: Reduce average annual runoff by 0.125 inches (1396 ac-ft) 	<ul style="list-style-type: none"> • Judicial Ditch 30/18/13: Reduce average annual runoff by 0.5 inch (1,750 ac-ft) • Lower Thief River/SD 83: Reduce average annual runoff by 0.5 inch (2,600 ac-ft) • Lost River: Reduce average annual runoff by 0.5 inch (1,750 ac-ft) • Marshall County Ditch 20: Reduce average annual runoff by 0.5 inch (5,600 ac-ft)



	Issue: Measurable Goal Categories	Short-term Goal(s)	Long-term Goal(s)
		<ul style="list-style-type: none"> • Middle Thief River/SD 83: No net increase in average annual runoff • Moose River/JD 21: No net increase in average annual runoff • Mud River/JD 11: No net increase in average annual runoff • Upper Thief River/SD 83: No net increase in average annual runoff 	<ul style="list-style-type: none"> • Middle Thief River/SD 83: No net increase in average annual runoff • Moose River/JD 21: No net increase in average annual runoff • Mud River/JD 11: No net increase in average annual runoff • Upper Thief River/SD 83: No net increase in average annual runoff
6	Drainage Management Systems – Erosion and Sedimentation Reduction	<ul style="list-style-type: none"> • Stabilize 20% of the 26 miles of drainage ditches, using multipurpose drainage management, in subwatersheds with high BANCS erosion estimates: Lower Thief River/SD 83, Moose River/JD 21, Mud River/JD 11, and County Ditch 20 • Provide adequate drainage to meet the design guidance objectives for a 10-year, 24-hour summer rainfall event in the Lower Thief, Marshall County Ditch 20, Moose River/JD 21, and Mud River/JD 11 planning regions 	<ul style="list-style-type: none"> • Stabilize 26 miles of drainage ditch using multipurpose drainage management in subwatersheds with high BANCS erosion estimates: Lower Thief River/SD 83, Moose River/JD 21, Mud River/JD 11, and County Ditch 20 • Extend short-term goal for providing adequate drainage based on design guidance objectives
7	Shoreland and Riparian Areas – Improve and Increase Vegetative Cover	<ul style="list-style-type: none"> • Achieve 100% compliance of Minnesota State Buffer Law within 1W1P area, increasing riparian vegetation, structure, and habitat and decreasing overland sediment and nutrient runoff 	<ul style="list-style-type: none"> • Continue 100% Minnesota Buffer Law compliance
8	Habitat for Wildlife – Enhance Connectivity and Cover	<ul style="list-style-type: none"> • Maintain and enhance the number of large terrestrial habitat blocks with the minimum size necessary to sustain ecosystem services representative of a terrestrial landscape within the plan area • No net loss of wetlands 	<ul style="list-style-type: none"> • Extend short-term goal
9	Aquatic Habitat for Fish, Macroinvertebrates and Aquatic Life – Restore Connectivity, Habitat, Moderated Flow Regimes and Promoted Vegetated Banks and Buffers	<ul style="list-style-type: none"> • Branch 200 of Judicial Ditch 11 (Lost River): Improve MSHA score of 34.5 (poor) by 15% • Judicial Ditch No. 30/18/13: Improve MSHA score of 36 (poor) by 15% • Lower Thief River/SD 83 (Agassiz Pool to Red Lake River): Improve MSHA score of 22.25 (poor) by 15% • Marshall County Ditch 20: Improve MSHA score of 34.5 (poor) by 15% 	<ul style="list-style-type: none"> • Extend short-term goal



	Issue: Measurable Goal Categories	Short-term Goal(s)	Long-term Goal(s)
		<ul style="list-style-type: none"> • Middle Thief River/SD 83: Improve MSHA score of 24.5 (poor) by 15% • Moose River/JD 21: Improve MSHA score of 38 (poor) by 15% • Mud River/JD 11: Improve MSHA score of 40.5 (poor) by 15% • Upper Thief River/SD 83: Improve MSHA score of 51.5 (fair) by 10% 	
10	Public Knowledge of and Behavior Related to Water Resources – Increase Stakeholder Participation	<ul style="list-style-type: none"> • Increase enrollment in programs outlined in Section 5 of plan 	<ul style="list-style-type: none"> • Extend short-term goal(s)
11	Data Collection – Enhance Knowledge of Baseline Conditions	<ul style="list-style-type: none"> • Altered Hydrology <ul style="list-style-type: none"> ○ Collect 10 years of continuous flow monitoring data at pour points of all eight subwatersheds • Groundwater Quantity <ul style="list-style-type: none"> ○ Collect 10 years of groundwater level monitoring data to establish a watershedwide baseline • Groundwater Quality <ul style="list-style-type: none"> ○ Arsenic: Collect 10 years of arsenic data in private wells to establish a watershedwide baseline • Bacteria: Collect 10 years of <i>E. coli</i> data in private wells to establish a watershedwide baseline • Nitrates: Collect 10 years of nitrate data in private wells to establish a watershedwide baseline • Tile Drainage <ul style="list-style-type: none"> ○ Develop records and spatial data of tiled acres within the watershed 	<ul style="list-style-type: none"> • Extend short-term goals or develop new goals if short-term goals are attained
12	Healthy Rural Landscapes – Improve Agricultural Soil Health	<ul style="list-style-type: none"> • Implement management practices in 5% (13,198 acres) of all cropland areas in the watershed to increase SOM content 1%. Areas to be managed are cropland areas categorized as rural stewardship “Probability Low” and “Probability Depends on Practice Effectiveness” that have SOM content of >1% and ≤4%. 	<ul style="list-style-type: none"> • Implement management practices in 41.5% (109,688 acres) of all cropland areas in the watershed to increase SOM content by 1%. Areas to be managed are cropland areas categorized as rural stewardship “Probability Low” and “Probability Depends on Practice Effectiveness” that have SOM content of >1% and ≤4%.
13	Healthy Rural Landscapes - Reduce Surface	<ul style="list-style-type: none"> • 100% of septic systems that are ITPHS are brought into compliance 	<ul style="list-style-type: none"> • Extend short-term goals



	Issue: Measurable Goal Categories	Short-term Goal(s)	Long-term Goal(s)
	and Groundwater Contamination	<ul style="list-style-type: none"> • 30% of septic systems that are FTPGW are upgraded • Maintain feedlot compliance if determined to be no known compliance issues 	



TARGETING IMPLEMENTATION EFFORTS AND IMPLEMENTATION PROGRAMS

Targeting means implementing the most cost-effective and measurable actions to make progress toward measurable goals.

The Thief River Watershed 1W1P Planning Group used the **Prioritize, Target, and Measure Application (PTMApp)** to estimate the locations, annual cost, water quality value (sediment, total nitrogen, and total phosphorous load reductions), and progress toward measurable goals arising from implementing the best structural practices that make up the targeted implementation approach. The Thief River Watershed 1W1P targeted implementation approach was designed to select the most cost-effective practices for removing sediment and nutrients (total phosphorus and total nitrogen) at the field edge until the cost of practices equaled what planning partners are currently spending annually on structural projects within each planning region.

The Thief River Watershed 1W1P Planning Group also designed the targeted implementation approach to select the widest range of practices in order to provide the most flexibility for local governments and landowners. These include a variety of practices preferred by landowners. Examples of locally accepted practices include storage practices (such as water and sediment control basins and drainage water management), management practices (such as nutrient management plans), and protection practices (such as grade stabilization and side water inlets). Designing the targeted implementation approach in this way identifies the most cost-effective practices in the plan area that are most likely to lead to voluntary implementation.

Targeted actions are housed within the **targeted implementation schedule**, which contains:

- a brief description of each action;
- the planning region where the action occurs;
- how much of the action will be implemented;
- how the action will be measured;
- when implementation will occur within the 10-year timeframe of the plan;
- the entities responsible and each one's role(s) in implementing the action;
- the estimated cost of the action; and
- the measurable goal corresponding to the action.

Many actions can be implemented in the Thief River Watershed to make progress toward goals. These actions are grouped into six categories:

- Implementation of **structural practices**, such as water and sediment control basins (WASCOBS), grade stabilization structures, filter strips, and grassed waterways
- Implementation of **management practices**, including planting cover crops, using conservation tillage methods, and fertilizer management methods
- Delivering **education and outreach** to increase public engagement, improve communication, and increase understanding
- Developing information to fill **data gaps** and complete **research**, and continue monitoring efforts;
- Executing local or state **regulatory** responsibilities
- Implementation of large, physical **capital improvement** projects, including multipurpose drainage management projects, two-stage ditches, and stream stabilization

Actions pertaining to education and outreach, data gaps and research, and regulatory responsibilities are implemented watershedwide to create consistency and opportunity for shared services. Actions dealing with capital improvement, structural, and management practices vary by planning region because the physical landscape and measurable goals differ among the planning regions. **Planning region implementation profiles (Section 4)** summarize current resource conditions within each planning region



and present information about the number, type, and location of structural and management practices for within each planning region. These profiles also present information about the relationship between the cost to implement practices and the potential progress practices can make toward measurable goals.

The ability and timing to achieve measurable goals largely depends on the amount of funding available to implement actions. However, the amount of funding for implementing this plan is uncertain. To address this challenge, there is more than one implementation funding scenario summarized in the targeted implementation schedule:

- The **Baseline** funding level is an annual and ten-year estimate of current LGU funding available for the plan area. This is the anticipated level of funding for implementation if no additional or outside funding sources are available.
- The **Level 1 Moderate** implementation funding level identifies actions for implementation if watershed-based noncompetitive grants are made available by the state. Estimates for funding are included if available/applicable for actions in this implementation funding level. If additional funding becomes available, these actions would be prioritized for implementation.
- The **Level 2 High** implementation funding level identifies actions for implementation if funding levels for the Baseline and Level 1 Moderate implementation funding levels are met. This level would fund projects that require greater investment of resources, have an implementation timeframe longer than the ten-year lifespan of the plan, or are important but not the highest priority.

In Section 4, all three implementation funding scenarios show increases in funding and relative increased progress toward plan goals. **Plan Section 5.2** and **Table ES-4** outline the most commonly used programs and grants for implementing the implementation program described by this plan and used within the targeted implementation schedule.



Table ES-4: Budget for the Baseline Implementation Funding Level for the Thief River Watershed One Watershed, One Plan

Implementation Program	Local		State		Federal		NGOs		All Sources	
	Annual	Total	Annual	Total	Annual	Total	Annual	Total	Annual	Total
Projects and Practices ¹	\$47,026	\$470,026	\$92,725	\$927,250	TBD	TBD	TBD	TBD	\$139,751	\$1,397,276
Regulatory ²	\$28,736	\$287,360	\$34,667	\$346,670					\$63,403	\$634,030
Research and Monitoring	\$24,826	\$248,260	\$780	\$7,800					\$25,606	\$256,060
Education and Outreach	\$17,553	\$175,530	\$1,115	\$11,150					\$18,668	\$186,680
Plan Administration ³	\$19,272	\$192,720	\$15,429	\$154,290					\$34,701	\$347,010
Capital Improvements ⁴	\$76,277	\$762,277	\$25,000	\$250,000					\$101,277	\$1,012,770
TOTAL	\$213,690	\$2,136,173	\$169,716	\$1,697,160	-	-	-	-	\$383,406	\$3,833,333

¹ Projects and Practices Cost Share amount based on current amount for all counties, and includes baseline costs for management practices and structural BMPs

² Assumes local fiscal support of local implementation of statutory obligations and ordinances remains unchanged.

³ Plan administration budgets like current local expenditures by individual counties. Estimated at 10% of annual baseline implementation budget. Does not include staffing for Research and Monitoring; Education and Outreach

⁴ Capital Improvement program includes expenditures for operations and maintenance of drainage ditches and impoundments.

* Collaborative grants assumed to be provided to the Thief River Watershed 1W1P as one or more non-competitive implementation block grant

Table ES-5: Level 1 Funding Summary

Level 1 Funding Summary Program	Total
Projects and Practices¹	\$8,480,189
Research and Monitoring	\$531,500
Education and Outreach	\$10,000
Capital Improvements²	\$12,591,393

¹ Projects and Practices Cost Share amount based on current amount for all counties, and includes baseline costs for management practices and structural BMPs

² Capital Improvement program includes expenditures for operations and maintenance of drainage ditches and impoundments

* Collaborative grants assumed to be provided to the Thief River Watershed 1W1P as one or more non-competitive implementation block grant



Table ES-6: Summary of Structural and Management Practices, Implementation Approach

Projects and Practices Summary						
Planning Region	Priority Tier	Action Level	Estimated Cost	PTMApp Treatment Group	Sediment Load Reduction (tons/yr)	Total Phosphorus Load Reduction (lbs/yr)
Lower Thief River/SD 83	1	Baseline	\$100,732	Filtration	800	162
			\$3,477	Protection	15	1
			\$59,716	Storage	207	44
			\$76,858	Source Reduction	1,428	269
		Level 1 Moderate	\$118,101	Filtration	227	53
			\$2,086,246	Storage	3,662	957
			\$245,067	Source Reduction	1,957	1,208
		Level 2 High	--	Biofiltration	74	37
			--	Filtration	60	11
			--	Protection	2,212	792
			--	Storage	1,312	360
			--	Source Reduction	3,101	1,380
		Mud River/JD 11	1	Baseline	\$66,956	Filtration
\$54,921	Storage				159	37
\$119,854	Source Reduction				1,276	451
Level 1 Moderate	\$31,403			Biofiltration	2	4
	\$30,321			Filtration	52	15
	\$1,687,443			Protection	663	235
	\$234,758			Storage	246	71
	\$92,702			Source Reduction	765	331
Level 2 High	--			Biofiltration	15	8
	--			Protection	919	311
	--			Storage	25	6
	--			Source Reduction	683	328
Marshall County Ditch No. 20	1			Baseline	\$57,692	Filtration
		\$59,940	Storage		187	41
		\$121,716	Source Reduction		1,106	510
		Level 1 Moderate	\$22,243	Filtration	43	10
			\$601,992	Storage	920	218
			\$80,646	Protection	31	17
			\$63,436	Source Reduction	603	248



Projects and Practices Summary						
Planning Region	Priority Tier	Action Level	Estimated Cost	PTMApp Treatment Group	Sediment Load Reduction (tons/yr)	Total Phosphorus Load Reduction (lbs/yr)
Upper Thief River/SD 83	2	Baseline	\$38,659	Filtration	78	28
			\$52,276	Storage	64	28
			\$4,849	Protection	2	1
			\$96,658	Source Reduction	1,083	403
		Level 1 Moderate	\$64,845	Biofiltration	1	10
			\$6,851	Filtration	3	1
			\$307,332	Protection	141	49
			\$5,096	Storage	3	1
			\$15,348	Source Reduction	134	61
			Branch 200 of JD 11 (Lost River)	2	Baseline	\$7,786
\$90,785	Protection	27				10
\$15,829	Storage	22				6
\$78,251	Source Reduction	438				178
Level 1 Moderate	\$629,220	Protection			142	42
	\$33,076	Source Reduction			151	60
Level 2 High	--	Infiltration			92	10
	--	Filtration			3	1
	--	Protection			90	30
	--	Storage			6	2
Judicial Ditch No 30/18/13	2	Baseline	\$16,897	Filtration	161	31
			\$79,068	Storage	216	59
			\$95,790	Source Reduction	948	399
		Level 1 Moderate	\$112,481	Storage	286	71
Middle Thief River/SD 83	3	Baseline	\$34,726	Filtration	13	25
			\$445	Storage	1	0
			\$37,059	Source Reduction	247	59
		Level 1 Moderate	\$73,564	Filtration	63	20
			\$692,197	Storage	221	59
			\$313,166	Source Reduction	1,152	512
		Level 2 High	--	Biofiltration	22	13
			--	Infiltration	212	23
			--	Protection	1,185	423
			--	Source Reduction	2,387	1,330



Projects and Practices Summary						
Planning Region	Priority Tier	Action Level	Estimated Cost	PTMApp Treatment Group	Sediment Load Reduction (tons/yr)	Total Phosphorus Load Reduction (lbs/yr)
Moose River/ JD 21	3	Baseline	\$22,961	Filtration	109	47
			\$12,634	Storage	42	10
			\$36,264	Source Reduction	334	154
		Level 1 Moderate	\$12,605	Filtration	18	6
			\$792,519	Protection	287	115
			\$88,471	Storage	97	29
			\$39,060	Source Reduction	368	160
		Level 2 High	--	Biofiltration	3	1
			--	Infiltration	71	10
			--	Protection	439	119
			--	Storage	14	4
			--	Source Reduction	446	219

For additional information regarding this information refer to Section 4. **Baseline** funding is an annual and ten-year estimate of current LGU funding available for a plan area. This is the anticipated level of funding for implementation if no additional or outside funding sources are available. **Level 1 Moderate** implementation funding identifies actions for implementation if watershed based noncompetitive grants are made available by the State. Estimates for funding are included if available and/or applicable for actions in this implementation funding level. If additional funding becomes available, these actions would be prioritized for implementation. **Level 2 High** implementation funding level identifies actions for implementation if funding levels for the Baseline and Level 1 Moderate levels are met. This level would fund projects that require greater investment of resources, have an implementation timeframe longer than the ten-year lifespan of the plan, or are important but not the highest priority.

If the actions of the targeted implementation approach could be successfully completed, they would result in the implementation and anticipated load reduction benefits from all structural practices within each planning region. Actions in the targeted implementation approach are also inclusive of actions to implement management practices, develop a consistent education and outreach activities for the watershed area, implement research to close data gaps and expand monitoring efforts, continue regulatory implementation, and construct capital improvement projects.

The Thief River Watershed 1W1P Planning Group previously entered into a formal agreement through a Memorandum of Agreement to lead the 1W1P planning process for the Thief River Watershed. The parties are drafting a revised Memorandum of Agreement for implementing this plan. Expectations are that the roles of the local Policy Committee, Planning Work Group, and Advisory Committee will shift and change focus during plan implementation.

Ultimately, the goal of this plan is to use local and state resources to efficiently manage, restore, and protect water resources in the Thief River Watershed. This plan is a ten-year guide to assist local governments to coordinate implementation efforts through annual work planning, improve efficiencies, and reduce redundancies in local water resource management.



**OFFICIAL PROCEEDINGS
PENNINGTON COUNTY BOARD OF COMMISSIONERS
TUESDAY, DECEMBER 27TH, 2019, 8:00 A.M.
PENNINGTON COUNTY BOARD ROOM JUSTICE CENTER**

Pursuant to adjournment, the Pennington County Board of Commissioners met in the Pennington County Justice Center Board Room in Thief River Falls, MN, on Tuesday, December 27th, 2019 at 8:00 a.m. Members Present: Donald Jensen, Bruce Lawrence, Cody Hempel, Neil Peterson, and Darryl Tveitbakk. Absent: None.

The meeting was called to order by Chairman Lawrence and the Pledge of Allegiance was recited.

Human Service Director Julie Sjostrand presented the Human Services Consent Agenda recommendation from the December 17th, 2019 Human Services Committee meeting. On a motion by Commissioner Hempel, seconded by Commissioner Tveitbakk, the following recommendations of the Pennington County Human Service Committee for December 17th, 2019 are hereby adopted. Motion carried.

SECTION A

- I. To approve the November 19, 2019 Human Service Committee Meeting minutes.
- II. To approve the agency's personnel action as presented.
- III.
 - A. To approve the CY 2020 Tri-Valley Transportation Business Contract between Tri-Valley Opportunity Council, Inc. and Pennington County Human Services as presented.
 - B. To approve the CY 2020 Pennington County Family Services/Children's Mental Health Collaborative Supportive Services Agreement with Northwestern Mental Health Center, Inc. as presented.
 - C. To extend the CY 2020 Behavioral Health (Community-Based Services/Residential/Temporary Confinement and CD Assessment) Purchase of Service Agreements between Sanford Behavioral Health and Pennington County Human Services pending finalization of new agreements.

SECTION B

- I. To approve payment of the Agency's bills.

Julie Sjostrand also stated that the Sanford Contract will not include a 3% increase for 2020.

Julie Sjostrand then reviewed a letter written to the Commissioner of the Department of Human Services stating that we do not plan to pay the invoice for Substance Use Disorder for Institutes of Mental Disease billing errors. Moved by Commissioner Jensen, seconded by Commissioner Peterson, to authorize the letter to be sent and authorize the Chairman to sign the letter. Motion carried.

County Sheriff Ray Kuznia made the recommendation to hire Kayla Dunwoody for the position of part-time Correctional Officer. Moved by Commissioner Jensen, seconded by Commissioner Tveitbakk, to hire Kayla Dunwoody for the position of part-time Correctional Officer effective December 28th, 2019. Motion carried.

Moved by Commissioner Jensen, seconded by Commissioner Tveitbakk, to accept the resignation of Scott Olsund from the position of part-time Dispatch/Jailer. Motion carried.

Moved by Commissioner Jensen, seconded by Commissioner Tveitbakk, to accept the resignation of Cody Bannert for the position of part-time Corrections Officer effective December 29th, 2019. Motion carried.

Sheriff Kuznia discussed the two unit heaters at the Sentence to Serve Office and garage. The east side heater is not able to be repaired and the west side heater has hairline cracks in the heat exchange. He has received quotes from BNJ Plumbing and Heating and Brodin Comfort Systems. Commissioner Peterson moved, seconded by Commissioner Hempel, to approve Brodin Comfort Systems to replace the two unit heaters in the Sentence to Serve Office and garage for the price of \$3,500.00. Motion carried.

Commissioner Hempel moved, seconded by Commissioner Tveitbakk, to purchase an overhead door and brackets from Peterson Lumber for the Sentence to Serve garage in the amount of \$2,959.95. Motion carried.

Sheriff Kuznia reviewed the National Incident-Based Reporting System Joint Powers Agreement. The following resolution was introduced by Commissioner Tveitbakk, seconded by Commissioner Peterson, and was carried pending review of the County attorney. Motion carried.

**RESOLUTION APPROVING STATE OF MINNESOTA JOINT POWERS
AGREEMENTS WITH THE COUNTY OF PENNINGTON ON BEHALF OF ITS
SHERIFF'S DEPARTMENT**

WHEREAS, the County of Pennington on behalf of its Sheriff's Department desires to enter into a Joint Powers Agreement with the State of Minnesota, Department of Public Safety, Bureau of Criminal Apprehension, to receive funding to use to implement an adapter to make its records management system compatible with Minnesota National Incident-Based Reporting System requirements for which the County is eligible.

NOW THEREFORE, BE IT RESOLVED by the County Board of Pennington County, Minnesota as follows:

1. That the State of Minnesota Joint Powers Agreement by and between the State of Minnesota acting through its Department of Public Safety, Bureau of Criminal Apprehension, and the County of Pennington on behalf of its Sheriff's Department, is hereby approved. A copy of the Joint Powers Agreement is attached to this Resolution and made a part of it.
2. That the County Sheriff Ray Kuznia or his successor, is designated the Authorized Representative for the County of Pennington. The Authorized Representative is also authorized to sign any subsequent amendment or agreement that may be required by the State of Minnesota to maintain the agreement with the State.
3. That Ray Kuznia, the Sheriff for the County of Pennington, and Bruce Lawrence, the County Board Chairman, are authorized to sign the State of Minnesota Joint Powers Agreement.

Sheriff Kuznia then discussed the Civil Process Fees and Jail Fee for the year 2020. The fee schedule was referred to the Law Enforcement Committee for recommendation.

County Engineer Mike Flaagan presented and reviewed a State of Minnesota Department of Transportation and Pennington County Detour Agreement that will reimburse

\$9,776.78 of maintenance cost on County Road #63 incurred when used as an unofficial detour during Trunk Highway No. 1 construction.

The following resolution was introduced by Commissioner Jensen, seconded by Commissioner Peterson, and upon vote was unanimously carried.

PENNINGTON COUNTY

RESOLUTION

IT IS RESOLVED that Pennington County enter into MnDOT Agreement No. 1035816 with the State of Minnesota, Department of Transportation for the following purposes:

To provide for a lump sum payment by the State to the County as the State's full and complete share of the costs for the use of County Road No. 63 as an unofficial detour route during the contract construction performed upon, along, and adjacent to Trunk Highway No.1 from Trunk Highway No. 32 (Main Avenue North) to 150th Avenue Northeast (County State Aid Highway No. 18) under State Project No. 5702-44.

IT IS FURTHER RESOLVED that the County Engineer and the County Board Chairman are authorized to execute the Agreement and any amendments to the Agreement.

*****two motions needed

County Assessor Adeline Olson asked that the County Board approve the hiring of Amy Levenhagen for the position of Deputy Assessor II position effective January 6th, 2020.

Moved by Commissioner Jensen, seconded by Commissioner Peterson, to hire Amy Levenhagen as the Deputy Assessor II effective January 6th, 2020. Motion carried.

Moved by Commissioner Jensen, seconded by Commissioner Peterson, to transfer \$32,573.53 from various ditch maintenance funds to the Road & Bridge Fund for work done by the Highway Department in 2019. Motion carried.

Moved by Commissioner Jensen, seconded by Commissioner Peterson, to authorize the County Auditor-Treasurer to make temporary transfers as outlined by the County Auditor-Treasurer to bring ditch balances to a positive balance at the end of 2019. Motion unanimously carried.

Moved by Commissioner Tveitbakk, seconded by Commissioner Peterson, to hold an Economic Development Tax Abatement Hearing on January 28th, 2020 at 6:00p.m. on the following properties approved by the City of Thief River Falls City Council. Motion carried.

- 25.12100610 – Jacob Toren
- 25.12100510 – Jamie Englund
- 25.11500100 – Suresh Sreedharan
- 25.11500101 – Steven Keough

Moved by Commissioner Peterson, seconded by Commissioner Jensen, to approve the minutes of December 3rd, 2019 as written. Motion carried.

Motioned by Commissioner Hempel, seconded by Commissioner Tveitbakk, to approve payment of the Human Services warrants totaling _____ and the following Commissioner warrants.

WARRANTS

County Revenue	\$ 162,559.90
Road & Bridge	\$ 149,031.84
Ditch Funds	\$ 41,583.50

Per diems and meal reimbursements in the amount of \$3,923.76 were also approved.

Motioned by Commissioner Hempel, seconded by Commissioner Jensen, to adjourn the Pennington County Board Meeting to Tuesday, January 7th, 2020 at 10:00 a.m. Motion carried.

ATTEST:

Kenneth Olson, Auditor-Treasurer
Pennington County

Bruce Lawrence, Chairman
Board of Commissioners

draft

Jennifer
1/6/20 3:48PM

Pennington County Financial System



Audit List for Board COMMISSIONER'S VOUCHERS ENTRIES

Print List in Order By: 1
1 - Fund (Page Break by Fund)
2 - Department (Totals by Dept)
3 - Vendor Number
4 - Vendor Name

Explode Dist. Formulas Y

Paid on Behalf Of Name
on Audit List?: N

Type of Audit List: D
D - Detailed Audit List
S - Condensed Audit List

Save Report Options?: N

DRAFT

Pennington County Financial System



Jennifer
1/6/20 3:48PM
1 County Revenue

Audit List for Board COMMISSIONER'S VOUCHERS ENTRIES

Page 2

Vendor No.	Name Account/Formula	Rpt Accr	Amount	Warrant Description Service Dates	Invoice # Paid On Bhf #	Account/Formula Descripti On Behalf of Name	1099
5	1329 A. J. SPANJERS COMPANY, INC. 01-218-000-0000-6636	AP	8,760.25	JOINT SEALANTS - FINAL		BUILDING IMPROVEMENTS	N
	1329 A. J. SPANJERS COMPANY, INC.		8,760.25	1 Transactions			
94	1011 ACE HARDWARE 01-501-000-0000-6300		17.99	REPAIR VOLLEYBALL NET	30861	REPAIRS & MAINTENANCE	N
	1011 ACE HARDWARE		17.99	1 Transactions			
17	13415 AMC/MCHRMA 01-041-000-0000-6241		125.00	2020 MCHRMA MEMBERSHIP DUES		DUES - AUDITOR	N
	13415 AMC/MCHRMA		125.00	1 Transactions			
6	1308 ASSOCIATION MINNESOTA COUNTIES 01-003-000-0000-6241		8,786.00	2020 MEMBERSHIP DUES	55311	DUES - BOARD	N
	1308 ASSOCIATION MINNESOTA COUNTIES		8,786.00	1 Transactions			
90	99999997 BANNERT/CODY 01-251-000-0000-6420	AP	84.73	UNIFORM ALLOWANCE REIMBURSE		JAILER UNIFORMS	N
	99999997 BANNERT/CODY		84.73	1 Transactions			
34	3352 CHARM-TEX INC 01-251-000-0000-6416	AP	152.80	SOCKS	0207059-IN	CLOTHING SUPPLIES - JAIL	N
36	01-251-000-0000-6255	AP	65.90	FEMININE PRODUCTS	0207614-IN	MEDICAL - LOCAL	N
35	01-251-000-0000-6416	AP	147.40	BOXERS	0207647-IN	CLOTHING SUPPLIES - JAIL	N
	3352 CHARM-TEX INC		366.10	3 Transactions			
65	3302 CREATIVE PRODUCT SOURCING INC 01-220-000-0000-6801	AP	1,045.53	PENCILS, ERASERS, STICKERS	130788	MISCELLANEOUS EXPENSE	N
	3302 CREATIVE PRODUCT SOURCING INC		1,045.53	1 Transactions			
28	99999997 CUSTOM INTERIORS & DESIGN, LLC 01-218-000-0000-6636	AP	4,006.74	SIGNAGE FOR JAIL		BUILDING IMPROVEMENTS	N
	99999997 CUSTOM INTERIORS & DESIGN, LLC		4,006.74	1 Transactions			
85	4313 DEPARTMENT OF MOTOR VEHICLES 01-201-000-0000-6304		24.25	LICENSE/REGISTRATION #01		REPAIR & MAINTENANCE - SQUADS	N
59	01-255-000-0000-6330		19.25	LICENSE/REGISTRATION 2012 FORD		TRAVEL & EXPENSE	N
60	01-255-000-0000-6330		19.25	LICENSE/REGISTRATION 2004 CHEV		TRAVEL & EXPENSE	N
61	01-255-000-0000-6330		19.25	LICENSE/REGISTRATION 93 CHEV		TRAVEL & EXPENSE	N
62	01-255-000-0000-6330		41.25	REGISTRATION 2015 TRAILER		TRAVEL & EXPENSE	N

Pennington County Financial System



Jennifer
1/6/20 3:48PM
1 County Revenue

Audit List for Board COMMISSIONER'S VOUCHERS ENTRIES

Page 3

Vendor No.	Name	Rpt	Amount	Warrant Description	Invoice #	Account/Formula Descripti	1099
No.	Account/Formula	Accr	Amount	Service Dates	Paid On Bhf #	On Behalf of Name	
63	01-255-000-0000-6330		19.25	REGISTRATION 2014 TRAILER		TRAVEL & EXPENSE	N
64	01-255-000-0000-6330		19.25	LICENSE/REGISTRATION 98 H&H		TRAVEL & EXPENSE	N
4313	DEPARTMENT OF MOTOR VEHICLES		161.75	7 Transactions			
4308	DOW ACOUSTICS INC						
10	01-218-000-0000-6636	AP	10,675.98	FINAL - JUSTICE CENTER		BUILDING IMPROVEMENTS	N
4308	DOW ACOUSTICS INC		10,675.98	1 Transactions			
8353	HEADWATERS REGIONAL DEVELOPMENT						
9	01-220-000-0000-6207		2,500.00	2020 RADIO BOARD CONTRIBUTION	203506MEM	RADIO	N
8353	HEADWATERS REGIONAL DEVELOPMENT		2,500.00	1 Transactions			
8385	HEARTLAND PAPER CO						
72	01-218-000-0000-6403	AP	77.76	GLASS CLEANER	6421600	JANITORIAL SUPPLIES	N
71	01-251-000-0000-6403	AP	123.56	JAIL CLEANING SUPPLIES	6436331	JANITORIAL SUPPLIES - JAIL	N
8385	HEARTLAND PAPER CO		201.32	2 Transactions			
8014	HUGOS #7						
8	01-003-000-0000-6330	AP	12.98	FOOD FOR MEETING	1155	TRAVEL & EXPENSE	N
8014	HUGOS #7		12.98	1 Transactions			
9309	IAAO						
11	01-106-000-0000-6241		200.00	IAAO 2020 RENEWAL MEMBERSHIP		DUES - ASSESSOR	N
9309	IAAO		200.00	1 Transactions			
10308	JOB'S INCORPORATED						
25	01-003-000-0000-6815		25,000.00	2020 CONTRACT SERVICES	530	ECONOMIC DEVELOPEMENT	N
10308	JOB'S INCORPORATED		25,000.00	1 Transactions			
11315	KILEN/CYNTHIA						
27	01-601-000-0000-6401	AP	13.35	EXTENSION MEETING EXPENSE		SUPPLIES - EXTENSION	N
11315	KILEN/CYNTHIA		13.35	1 Transactions			
12332	LAW ENFORCEMENT TECHNOLOGY GROU						
67	01-220-000-0000-6263		25,904.45	ANNUAL SOFTWARE MAINTENANCE	258925	COMPUTER SERVICES & SUPPLIES	N
68	01-220-000-0000-6263		3,000.00	HOSTING & SUPPORT MAINTENANCE	258925	COMPUTER SERVICES & SUPPLIES	N
69	01-220-000-0000-6263		446.25	LETG SOFTWARE ANNUAL MAINT	258925	COMPUTER SERVICES & SUPPLIES	N
70	01-220-000-0000-6263		825.00	ANNUAL (6) VPN HOSTING	263290	COMPUTER SERVICES & SUPPLIES	N
12332	LAW ENFORCEMENT TECHNOLOGY GROU		30,175.70	4 Transactions			

Pennington County Financial System



Jennifer
1/6/20 3:48PM
1 County Revenue

Audit List for Board COMMISSIONER'S VOUCHERS ENTRIES

Page 4

Vendor No.	Name Account/Formula	Rpt Accr	Amount	Warrant Description Service Dates	Invoice # Paid On Bhf #	Account/Formula Descripti On Behalf of Name	1099
93	12373 LEADSONLINE LLC 01-220-000-0000-6263		1,188.00	INVESTIGATION SYS SERVICE 2020	253248	COMPUTER SERVICES & SUPPLIES	N
	12373 LEADSONLINE LLC		1,188.00	1 Transactions			
84	12324 LOVLY/DAVID 01-201-000-0000-6450	AP	111.99	UNIFORM ALLOWANCE REIMBURSE		PART-TIME DEPUTY'S UNIFORMS	N
	12324 LOVLY/DAVID		111.99	1 Transactions			
45	999999997 MAE4-HYDP 01-601-000-0000-6801		55.00	ASSOC OF EXT 2020 MEMBERSHIP		MISCELLANEOUS EXPENSE - EXTEN:	N
	999999997 MAE4-HYDP		55.00	1 Transactions			
12	13498 MARCO TECHNOLOGIES LLC 01-801-000-0000-6301	AP	261.84	EQ238936 MAINTENANCE AGREEMENT	INV7134506	MAINTENANCE AGREEMENT	N
	13498 MARCO TECHNOLOGIES LLC		261.84	1 Transactions			
58	13336 MID-STATES ORGANIZED CRIME INFO CE 01-201-000-0000-6241		100.00	2020 MEMBERSHIP	420192056	DUES	N
	13336 MID-STATES ORGANIZED CRIME INFO CE		100.00	1 Transactions			
83	13433 MILLER/KYLE 01-201-000-0000-6420	AP	108.43	UNIFORM ALLOWANCE REIMBURSE		UNIFORMS	N
	13433 MILLER/KYLE		108.43	1 Transactions			
14	13400 MN ASSOCIATION OF COUNTY OFFICERS 01-041-000-0000-6241		720.00	2020 MACO DUES		DUES - AUDITOR	N
15	01-101-000-0000-6241		360.00	2020 MACO DUES		DUES - RECORDER	N
	13400 MN ASSOCIATION OF COUNTY OFFICERS		1,080.00	2 Transactions			
73	13355 MN COUNTIES COMPUTER COOP 01-070-000-0000-6263		300.00	2020 JIC ENHANCEMENT FUND	2001200	COMPUTER SERVICES - DP	N
74	01-070-000-0000-6263		5,106.00	2020 IFS SUPPORT(AUD/TREAS)	2001200	COMPUTER SERVICES - DP	N
	13355 MN COUNTIES COMPUTER COOP		5,406.00	2 Transactions			
16	13035 MN COUNTY ATTORNEYS ASSN 01-091-000-0000-6241		2,574.00	2020 MCAA DUES	21867	DUES	N
	13035 MN COUNTY ATTORNEYS ASSN		2,574.00	1 Transactions			
87	13324 MN SHERIFFS ASSOCIATION 01-201-000-0000-6241		1,996.70	2020 ANNUAL SHERIFF DUES	200057	DUES	N

Pennington County Financial System



Jennifer
1/6/20 3:48PM
1 County Revenue

Audit List for Board COMMISSIONER'S VOUCHERS ENTRIES

Page 5

Vendor No.	Name	Rpt	Amount	Warrant Description	Invoice #	Account/Formula Descripti	1099
No.	Account/Formula	Accr	Amount	Service Dates	Paid On Bhf #	On Behalf of Name	
88	01-252-000-0000-6330		1,999.65	2020 ANNUAL LEXIPOL DUES	200144	TRAVEL & EXPENSE	N
89	01-252-000-0000-6330		731.00	2020 ICLD PROJECT/YEARLY DUES	200231	TRAVEL & EXPENSE	N
13324	MN SHERIFFS ASSOCIATION		4,727.35	3 Transactions			
14328	NELSON/BRANDY						
82	01-251-000-0000-6420	AP	28.25	UNIFORM ALLOWANCE REIMBURSE		JAILER UNIFORMS	N
14328	NELSON/BRANDY		28.25	1 Transactions			
14347	NEOPOST USA - MAILFINANCE						
13	01-801-000-0000-6301	AP	879.80	OCT 19 - JAN 20 METER RENTAL	N8071709	MAINTENANCE AGREEMENT	N
14347	NEOPOST USA - MAILFINANCE		879.80	1 Transactions			
14033	NORTHERN STATE BANK						
92	01-201-000-0000-6304	AP	42.69	WIPER BLADES #06		REPAIR & MAINTENANCE - SQUAD	N
91	01-251-000-0000-6330	AP	10.01	TRANSPORT - INMATE MEAL		TRAVEL & EXPENSE	N
14033	NORTHERN STATE BANK		52.70	2 Transactions			
14123	NORTHWEST BEVERAGE INC						
26	01-801-000-0000-6801	AP	36.75	WATER	5447	MISCELLANEOUS EXPENSE	N
14123	NORTHWEST BEVERAGE INC		36.75	1 Transactions			
15323	OFFICE DEPOT						
86	01-220-000-0000-6401	AP	126.89	TONER	419236912001	SUPPLIES	N
78	01-132-000-0000-6401	AP	319.99	TONER	419641001001	SUPPLIES - MOTOR VEHICLE	N
76	01-270-000-0000-6401	AP	72.23	TONER	419641106001	SUPPLIES - CRIME	N
77	01-270-000-0000-6401	AP	268.58	TONER	419641106001	SUPPLIES - CRIME	N
15323	OFFICE DEPOT		787.69	4 Transactions			
15370	ONSOLVE, LLC						
57	01-223-000-0000-6801		4,647.00	CODE RED 2020	54661801573	MISCELLANEOUS EXPENSE-E911	N
15370	ONSOLVE, LLC		4,647.00	1 Transactions			
18319	RT VISION, INC.						
75	01-070-000-0000-6263		480.00	BASIC SOFTWARE UPGRADE	2019-100945	COMPUTER SERVICES - DP	N
18319	RT VISION, INC.		480.00	1 Transactions			
19369	SANFORD PATIENT FINANCIAL SERVICES						
38	01-251-000-0000-6255	AP	130.29	DR 2423	94917516	MEDICAL - LOCAL	6
40	01-251-000-0000-6255	AP	107.82	DR 2053	95292897	MEDICAL - LOCAL	6
41	01-251-000-0000-6255	AP	14.88	DR 1554	95451222	MEDICAL - LOCAL	6

Pennington County Financial System



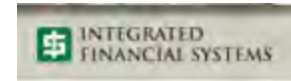
Jennifer
1/6/20 3:48PM
1 County Revenue

Audit List for Board COMMISSIONER'S VOUCHERS ENTRIES

Page 6

Vendor No.	Name	Rpt	Account/Formula	Accr	Amount	Warrant Description	Invoice #	Account/Formula Descripti	1099
						Service Dates	Paid On Bhf #	On Behalf of Name	
42			01-251-000-0000-6255	AP	33.73	DR 2452	95509424	MEDICAL - LOCAL	6
43			01-251-000-0000-6255	AP	23.93	DR 2425	95744505	MEDICAL - LOCAL	6
44			01-251-000-0000-6255	AP	77.98	DR 2515	95801242	MEDICAL - LOCAL	6
39			01-251-000-0000-6255	AP	46.59	DR 2235	95859882	MEDICAL - LOCAL	6
19369	SANFORD PATIENT FINANCIAL SERVICES				435.22				
						7 Transactions			
24	19321	STEINBRECHER PAINTING COMPANY	01-218-000-0000-6636	AP	15,102.65	PAINTING FINAL - JUSTICE CTR		BUILDING IMPROVEMENTS	N
	19321	STEINBRECHER PAINTING COMPANY			15,102.65		1 Transactions		
29	19550	SUMMIT FOOD SERVICE MANAGEMENT L	01-251-000-0000-6403	AP	195.08	PAPER/CLEANING	66000	JANITORIAL SUPPLIES - JAIL	N
30			01-251-000-0000-6427	AP	3,511.30	JAIL MEALS 12/14/19 - 12/20/19	66001	JAIL MEALS	N
31			01-251-000-0000-6427	AP	3,470.35	JAIL MEALS 12/21/19 - 12/27/19	66589	JAIL MEALS	N
	19550	SUMMIT FOOD SERVICE MANAGEMENT L			7,176.73		3 Transactions		
80	19362	SUNDBY CLEANING, LLC	01-800-000-0000-6262	AP	1,800.00	DECEMBER CLEANING - SS	PCLEC1219	OTHER SERVICES-WELFARE BUILDI	Y
79			01-111-000-0000-6262	AP	1,300.00	DECEMBER CLEANING - LEC	PCSS1219	OTHER SERVICES - COURTHOUSE	Y
	19362	SUNDBY CLEANING, LLC			3,100.00		2 Transactions		
33	21332	ULINE	01-251-000-0000-6403	AP	98.00	AIRFRESH SPRAY	115259007	JANITORIAL SUPPLIES - JAIL	N
32			01-251-000-0000-6403	AP	96.00	KLEENEX	115290715	JANITORIAL SUPPLIES - JAIL	N
	21332	ULINE			194.00		2 Transactions		
37	21008	UNIVERSAL SCREEN PRINT	01-251-000-0000-6420	AP	293.50	CUSTOM RUG	38414	JAILER UNIFORMS	N
	21008	UNIVERSAL SCREEN PRINT			293.50		1 Transactions		
81	22304	VFW POST 2793	01-121-000-0000-6846	AP	1,432.60	VET TRANSPORT - DECEMBER		CVSO GRANT EXPENSE	N
	22304	VFW POST 2793			1,432.60		1 Transactions		
66	26315	ZUERCHER TECHNOLOGIES, LLC	01-223-000-0000-6801		5,956.65	INSIGHT MAPPING YEARLY MAINT	263263	MISCELLANEOUS EXPENSE-E911	N
	26315	ZUERCHER TECHNOLOGIES, LLC			5,956.65		1 Transactions		
1 Fund Total:					148,349.57	County Revenue		42 Vendors	72 Transactions

Pennington County Financial System



Jennifer
1/6/20 3:48PM
3 Road & Bridge

Audit List for Board COMMISSIONER'S VOUCHERS ENTRIES

Page 7

Vendor No.	Name Account/Formula	Rpt Accr	Amount	Warrant Description Service Dates	Invoice # Paid On Bhf #	Account/Formula Descripti On Behalf of Name	1099
46	1350 AMERIPRIDE SERVICES, INC 03-320-000-0000-6202	AP	613.72	SHOP 500 RUGS		TELEPHONE	N
	1350 AMERIPRIDE SERVICES, INC		613.72		1 Transactions		
47	3315 CARGILL, INCORPORATED 03-350-000-0000-6565	AP	12,716.70	SALT		ROAD MATERIALS	N
	3315 CARGILL, INCORPORATED		12,716.70		1 Transactions		
48	4353 DLT SOLUTIONS 03-330-000-0000-6554		1,053.50	AUTO CAD LICENSE RENEWAL 2020		ENGINEERING & SURVEYING SUPPLI	N
	4353 DLT SOLUTIONS		1,053.50		1 Transactions		
49	15323 OFFICE DEPOT 03-320-000-0000-6401	AP	37.96	PAPER		SUPPLIES	N
	15323 OFFICE DEPOT		37.96		1 Transactions		
50	16310 POLK COUNTY AUDITOR 03-350-000-0000-6550	AP	1,257.75	GRAVEL TAX		AGGREGATES	N
	16310 POLK COUNTY AUDITOR		1,257.75		1 Transactions		
51	16419 PRECISE MRM LLC 03-350-000-0000-6564	AP	185.61	MONTHLY GPS - NOEMBER		EQUIPMENT REPAIR PARTS	N
	16419 PRECISE MRM LLC		185.61		1 Transactions		
52	16332 PRO CAL CORPORATION 03-330-000-0000-6300	AP	60.00	CALEBRATE EQUIPMENT		REPAIRS & MAINTENANCE	N
	16332 PRO CAL CORPORATION		60.00		1 Transactions		
53	18440 READITECH IT SOLUTIONS 03-320-000-0000-6202	AP	40.00	HOSTED EXCHANGE - DECEMBER		TELEPHONE	N
55	03-320-000-0000-6202		40.00	HOSTED EXCHANGE - JANUARY		TELEPHONE	N
54	03-320-000-0000-6263	AP	67.00	BACK U P MANAGER - DECEMBER		COMPUTER SERVICES	N
56	03-320-000-0000-6263		67.00	BACK UP MANAGER - JANUARY		COMPUTER SERVICES	N
	18440 READITECH IT SOLUTIONS		214.00		4 Transactions		
3 Fund Total:			16,139.24	Road & Bridge		8 Vendors	11 Transactions

Pennington County Financial System



Jennifer
1/6/20 3:48PM
32 Solid Waste Facility

Audit List for Board COMMISSIONER'S VOUCHERS ENTRIES

Page 8

Vendor No.	Name Account/Formula	Rpt Accr	Amount	Warrant Description Service Dates	Invoice # Paid On Bhf #	Account/Formula Descripti On Behalf of Name	1099
7	1308 ASSOCIATION MINNESOTA COUNTIES 32-390-000-0000-6801		150.00	SOLID WASTE MEMBERSHIP		MISCELLANEOUS EXPENSE-SCORE / N	
	1308 ASSOCIATION MINNESOTA COUNTIES		150.00	1 Transactions			
32 Fund Total:			150.00	Solid Waste Facility	1 Vendors	1 Transactions	

DRAFT

Pennington County Financial System



Jennifer
1/6/20 3:48PM
35 Justice Center Jail Bond Fu

Audit List for Board COMMISSIONER'S VOUCHERS ENTRIES

Page 9

Vendor Name	Rpt	Warrant Description	Invoice #	Account/Formula Descripti	1099
<u>No.</u> <u>Account/Formula</u>	<u>Accr</u>	<u>Amount</u>	<u>Service Dates</u>	<u>Paid On Bhf #</u> <u>On Behalf of Name</u>	
1450 ASSOCIATED BANK GREEN BAY, N.A.					
1 35-940-000-0000-6704		220,000.00	PRINCIPAL - JAIL BOND 2016A	PRINCIPAL - J.C. JAIL BOND FUND	N
2 35-940-000-0000-6705		68,850.01	INTEREST - JAIL BOND 2016A	INTEREST - J.C. JAIL BOND FUND	N
1450 ASSOCIATED BANK GREEN BAY, N.A.		288,850.01	2 Transactions		
35 Fund Total:		288,850.01	Justice Center Jail Bond Fund	1 Vendors	2 Transactions

DRAFT

Pennington County Financial System



Jennifer
1/6/20 3:48PM
36 Justice Center Capital Imp

Audit List for Board COMMISSIONER'S VOUCHERS ENTRIES

Page 10

Vendor	Name	Rpt	Warrant Description	Invoice #	Account/Formula Descripti	1099
No.	Account/Formula	Accr	Amount	Service Dates	Paid On Bhf #	On Behalf of Name
3	1450 ASSOCIATED BANK GREEN BAY, N.A. 36-941-000-0000-6704		430,000.00	PRINCIPAL - JC CAP IMP BOND 16		PRINCIPAL - J.C. CAPITAL IMPR BOI N
4	36-941-000-0000-6705		146,103.13	INTEREST - JC CAP IMP BOND 16B		INTEREST - J.C. CAPITAL IMPR BON N
	1450 ASSOCIATED BANK GREEN BAY, N.A.		576,103.13	2 Transactions		
36 Fund Total:			576,103.13	Justice Center Capital Improven	1 Vendors	2 Transactions

DRAFT

Pennington County Financial System



Jennifer
1/6/20 3:48PM
40 Ditch Funds

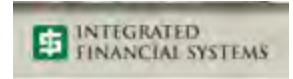
Audit List for Board COMMISSIONER'S VOUCHERS ENTRIES

Page 11

Vendor Name	Rpt	Warrant Description	Invoice #	Account/Formula Descripti	1099
<u>No.</u> <u>Account/Formula</u>	<u>Accr</u>	<u>Amount</u>	<u>Service Dates</u>	<u>Paid On Bhf #</u>	<u>On Behalf of Name</u>
14323 NORTHLAND TRUST SERVICES INC					
18 40-784-000-0000-6704		25,000.00		PRINCIPAL - RLWD 14	N
19 40-784-000-0000-6705		5,043.75		INTEREST - RLWD 14	N
20 40-784-000-0000-6706		247.50		COST - RLWD 14	N
21 40-785-000-0000-6704		20,000.00		PRINCIPAL - RLWD #15	N
22 40-785-000-0000-6705		4,368.75		INTEREST - RLWD #15	N
23 40-785-000-0000-6706		247.50		COST - RLWD #15	N
14323 NORTHLAND TRUST SERVICES INC		54,907.50	6 Transactions		
40 Fund Total:		54,907.50	Ditch Funds	1 Vendors	6 Transactions
Final Total:		1,084,499.45	54 Vendors	94 Transactions	

DRAFT

Pennington County Financial System



Audit List for Board COMMISSIONER'S VOUCHERS ENTRIES

Recap by Fund	<u>Fund</u>	<u>AMOUNT</u>	<u>Name</u>	
	1	148,349.57	County Revenue	
	3	16,139.24	Road & Bridge	
	32	150.00	Solid Waste Facility	
	35	288,850.01	Justice Center Jail Bond Fund	
	36	576,103.13	Justice Center Capital Improven	
	40	54,907.50	Ditch Funds	
	All Funds	1,084,499.45	Total	Approved by,
			
			

DRAFT